



DAEDONG METAL

Specialized Manufacturer Of Metal Bearings

COMPANY PROFILE



Company Introduction

CLOSER TO CUSTOMERS

“Close to Customers” is the tagline we use. However, all Daedong Metal personnel view it as an integral part of WE, who are united in Daedong Metal, and not as a partner (I & YOU: You and I) or a client. Knowing that our clients’ requirements are our fundamental value, we are making a lot of effort to become a single entity with them.

1. When it comes to the work of “creating a real-time organization” (REAL-TIME ORGANIZATION) in collaboration with customers, we will not hesitate to take customer needs into consideration as our value.
2. We will fully utilize the technology of strategic thought and action that takes place in a “ultra-short cycle” as a catalyst for change.
3. We will try our best to use and use the inherent value of a network that is connected to our consumers wherever they are, both online and offline.

Daedong Metal is positioned in **the minds of our clients as the hub** where cutting-edge strategies for achieving corporate success are conceived and implemented.



thank you,

Chief Executive Officer *Mosae Park*

 DAEDONG METAL IND.CO.

HELLO!

CONTENTS

 Company Introduction	02
 Company Overview	04
 Company History	06
 Company Vision & mission	08
 Bearings for power plants	09
· Nuclear power plant plain bearing	
· Thermal power plant plain bearing	
· Hydro electric power plant bearing	
· Gas turbine bearing	
 Bearings for vessel engine	14
· Vessel engine bearing	
· Stern tube & inter mediator bearing	
· Turbo charger bearing	
 Bearings for industrial plants	18
· Pump, fan, motor bearing	
· Industrial plant bearing	
· Superspeed special tilting pad bearing	
 Our Products	21
· Valves & accessories	
 Patents and Certificate	22
 Chemical Composition	23

Company Overview

QUALITY BUILD FOR COMPETITIVENESS

Domestic power plants and major ship operations were reliant on foreign supplies to a significant degree. In the 1970s, there were numerous issues, including high maintenance expenses and higher inventory costs owing to supply delays. Prior to this, the localization of major components was an urgent matter. In addition, it was founded with the hope that if these components are developed, it will be feasible to join international markets as well as large domestic markets in the future.

Scan QR Code

To Message Us



On-Time Delivery

We promise the consistency of delivery and quality requested by our customers.



Largest Jigs

For continuous competitiveness, we have the most production jigs in Korea.



Experienced Team

As the longest-running company in Korea, we have know-how in producing various products.

Specialized Manufacturer Of Metal Bearings

For Power Plants And Ship Drive Systems



Company History

MILESTONE

Scan QR Code
To Follow Us



The achievement of our goals of expansion and long-term viability through the acquisition of competence in the domains of energy generation and logistics transportation is our hope. We have been putting in a lot of effort to build a company that is reliable and sustainable.



TO BE MORE ACCESSIBLE TO CUSTOMERS



300+

Products Were Delivered / Lot

We want to create a business that makes products that you can trust and entrust us with, as well as a place where employees can realize both their high level of professional knowledge and their happy self-realization.



Company Vision & mission

WORK WITH DAEDONG,

At Daedong Metal, we recognize that no two customers have identical bearing requirements.

The intricacy of their application and bearing knowledge considerably influences their ability to identify and source the appropriate bearing. For customers with complex applications and little bearing knowledge, selecting the right choice can be challenging. Nonetheless, the Emerson Bearing team is available to assist. Our specialists are committed to ensuring that each client obtains the bearing that is optimal for their application. We offer support with the subsequent:



Understand of Client's Need

Identifying the need for bearings, including pricing options and supply timelines. We must identify client needs to design a product that solves their difficulties. Additionally, aligning our internal teams around consumer needs is the best method to smartly position our brand in the market.



Carefully Decided Solution

Deciding which bearing best meets the established needs and constraints. Approaches to problems, also known as problem-solving techniques, are methods that can assist you in looking beyond the obvious answers to a problem in order to locate the most effective solution to that problem.



Sales and Manufacturing at Once

Because it requires a company to strike a balance between two distinct and frequently competing priorities, selling and manufacturing at the same time can have an impact on work processing. These priorities include producing goods in an efficient and effective manner, while also satisfying the demands of customers and making sales.

INDUSTRIES

Industries We Work For

BEARINGS FOR POWER PLANTS

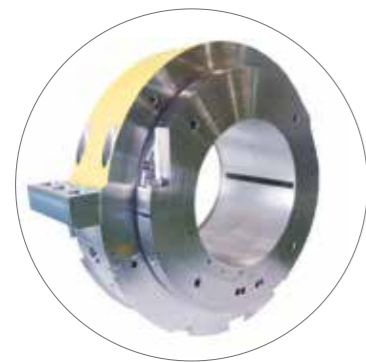


Scan QR Code
To Message Us

Products

NUCLEAR POWER PLANT PLAIN BEARING

We have extensive experience and know-how in producing and repairing turbines ranging from the first model of domestic nuclear power plant introduction, 600MW, through the Korean standard model OPR1000, and the most recent model APR1400, as well as generator metal bearings. We actively respond to consumer requests in any product in linked industries.



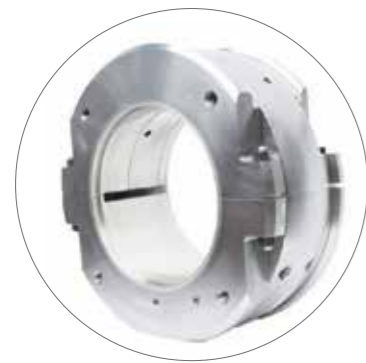
Turbine Bearing Ass'y



Liner Bearing



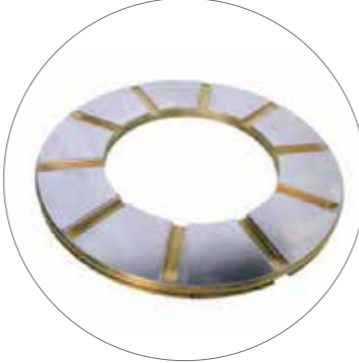
Thrust Casing



Bearing Casing



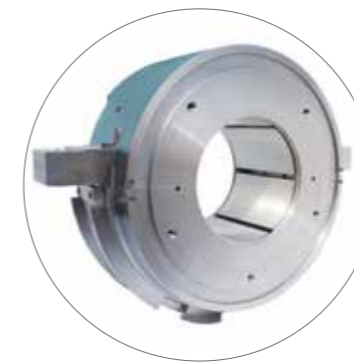
Bearing Ring



Taper land Thrust Plate

THERMAL POWER PLANT PLAIN BEARING

We have expertise in bearings used in high-efficiency power plants. We can actively respond to customer needs such as tilting pad type for high-pressure turbines operating at less than 3600 RPM, elliptical type pressure bearing often used for medium-low pressure, and thrust bearing that absorbs and supports axial loads.

Turbine Tilting Pad Bearing
(T1 ~ T2, 3, 4)
For High Pressure

Tilting Pad

Elliptical Type Bearing
For Low Pressure

Taper Land Pad Bearing



HYDRO ELECTRIC POWER PLANT BEARING

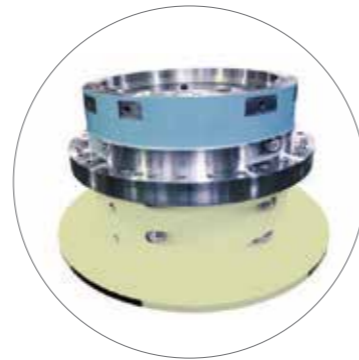
Bearings are manufactured in large scale to maintain a stable operation efficiency even at extreme status with heavy weight and low speed of hydro electric power plant. Also, high bonding between back metal and white metal is required to produce bearings.



Upper Side thrust &
Pad Bearing Housing A'ssy



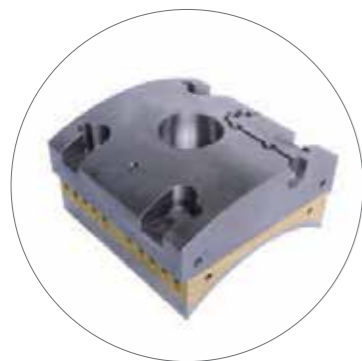
Guide and
Thrust Bearing



Turbine Bearing

GAS TURBINE BEARING

Bearings for a gas turbine power plant, which especially takes up a large share of new generation plants, require high reliability as they need to support high temperature and high pressure. They are high value added bearings with stable operation efficiency even at high precision and high temperature.



Turbine Bearing
Segment



Segment with
Housing



Bearing Ass'y



The achievement of our goals of expansion and long-term viability through the acquisition of competence in the domains of energy generation and logistics is our hope. A company that is reliable and will last for a long time; a company that manufactures goods so that customers can have faith in us; The executives and workers all have a high level of professional knowledge, and we work hard to make our company a place where people can realize their potential and be happy doing it.

We make power generation and ship drive metal bearings. We promise scarcity and continuity.

INDUSTRIES

Industries We Work For

BEARINGS FOR VESSEL ENGINE



- ✓ AKASKA : AH-28 / A-38 / 37LA / 45LA
- ✓ DAIHATSU : DL-19 / DK-20 / DK-32 / DS26
- ✓ YANMAR : S165 / M200 / T220 / Z280
- ✓ NIIGATA : 25BX / 26AGTE / M28AFT / 31EZ
- ✓ HANSHIN : LUN28 / EL30 / EL35 / LU54A
- ✓ STX engine : L35MC / 42MC
- ✓ DOO SAN engine
- ✓ HYUN DAI engine

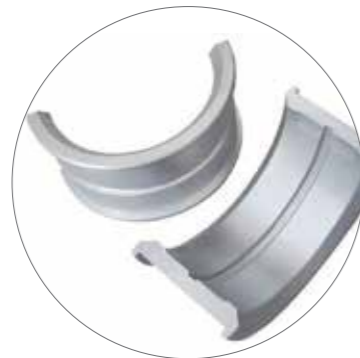


Scan QR Code
To Message Us

Products

VESSEL ENGINE BEARING

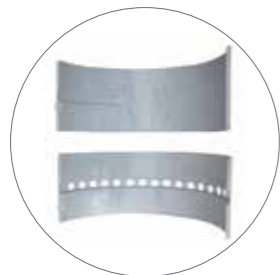
We have been manufacturing metal bearings for marine engines over 40 years. We have amassed a wealth of technology, know-how, and exceptional human resources. Durability and failure rate have been significantly improved with the greatest quality and service. We guarantee to provide our customers with the items they require by having ZIG support numerous engines.



Main Bearing



Main Bearing



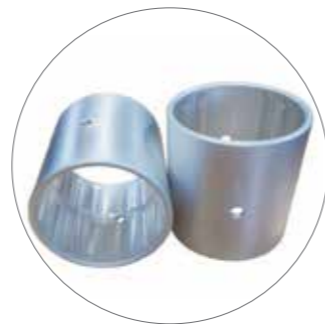
Crank Shaft Bearing



Con Rod



Crank Pin Bush



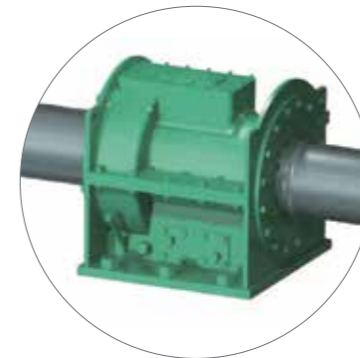
Main Bush

STERN TUBE & INTER MEDIATOR BEARING

The stern tube and intermediate shaft bearing, which comprise a ship's shaft system, play a part in conveying the engine's rotational power to the propeller. It is a product that requires high reliability and can respond to any product due to our extensive manufacturing knowledge.



Stern Tube



Inter Mediator Bearing



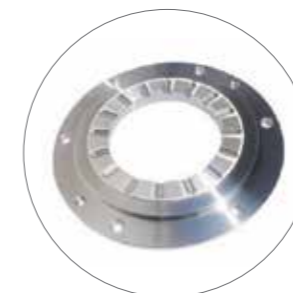
Pedestal Bearing

TURBO CHARGER BEARING

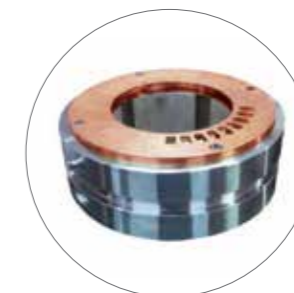
Turbocharger bearings must sustain journals that rotate at high speeds. It is necessary to use high-precision manufacturing technology, which may be processed and produced on precision machines such as our M.C.T. and CNC Lathe.



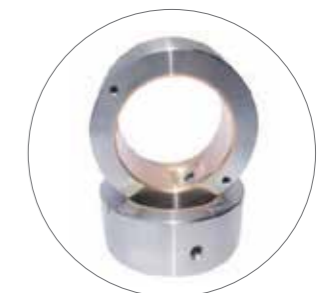
Bushing



Land Thrust



Seal Cover Tilting Pad



H.P Journal

INDUSTRIES

Industries We Work For

BEARINGS FOR INDUSTRIAL PLANTS



- ✔ pump, fan, motor bearing
- ✔ industrial plant bearing
- ✔ superspeed special tilting pad bearing



Scan QR Code
To Message Us

PUMP, FAN, MOTOR BEARING



Spherical Seat shell B'rg
Use on motor, fans, water turbines and pumps.



Special Pump Bearing
Use on high speed and high load oil pumps.



Fan Bearing
It bearing will be actively responding to various loading

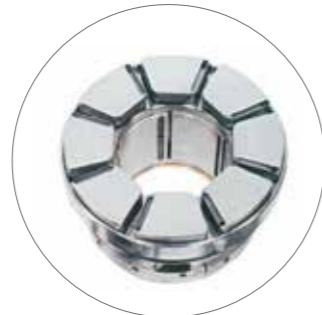


Labrinth seal
To help prevent the leakage of the oil lubricating the bearing

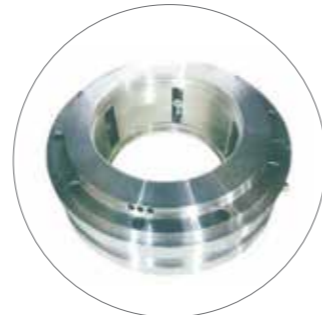
INDUSTRIAL PLANT BEARING



Seal Tilting Pad Journal Bearing



Tilting Pad Thrust Bearing



Turbine Tilting Pad Bearing

SUPERSPEED SPECIAL TILTING PAD BEARING



Tilting Pad Flexure Bearing



Tilting Pad Journal Bearing



Flexure Pivot Type Tilting Pad Bearing



Self Alignment Tilting Pad Thrust Bearing



Journal Bearing



Copper Base Journal Bearing



Our Products

VALVES & ACCESSORIES



Steam Drain & Control Valve



Steam Drain & Control Valve



Steam Control Valve



Steam Control Valve



Steam Control Valve



Valve Stem & DISC



Valve Stem & DISC



Temp. Contral Valve



Temp. Contral Valve

PATENTS AND CERTIFICATE

5 THERMO POWER PATENTS



Metal Bearing



Sleeve Bearing



Certification of KEPCO KPS partner at nuclear field



Certification of KHNP qualified supplier



PATENT



Nitridation of Boron processing for wear resistance and high hardness and material with the method



Zig to manufacture brush seal



Product registration certification



Nitridation of Boron processing for steel and high alloy metal and material with the method



ETC



Pump (axial flow)



Pump (mixed flow)



Thrust, Journal



Below Globe Valve Cast 2500



Below Globe Valve Forged 2500



Below Gate Valve Cast 2500



Below Gate Valve Forged 2500



Gear Coupling (Chain Type)



Certification of KEPCO KPS partner at thermo power field



ISO



Registered EWP selected product certification



Certification for venture company



KITECH partner certification

CHEMICAL COMPOSITION

WHITE METAL

KIND	SIGN	APPLY	CHEMICAL COMPOSITION (%)												
			Sn	Sb	Cu	Pb	Zn	As	IMPURITIES						
			Pb	Fe	Zn	Al	Bi	As	Cu						
WHITE METAL 1	WJ 1	High Speed Heavy Weight	remain	5.0~7.0	3.0~5.0	-	-	-	0.50 MAX	0.08 MAX	0.01 MAX	0.01 MAX	0.08 MAX	0.10 MAX	-
WHITE METAL 2	WJ 2		remain	8.0~10.0	5.0~6.0	-	-	-	0.50 MAX	0.08 MAX	0.01 MAX	0.01 MAX	0.08 MAX	0.10 MAX	-
WHITE METAL 2B	WJ 2B		remain	7.5~9.5	7.5~8.5	-	-	-	0.50 MAX	0.08 MAX	0.01 MAX	0.01 MAX	0.08 MAX	0.10 MAX	-
WHITE METAL 3	WJ 3	High Speed Medium Weight	remain	11.0~12.0	4.0~5.0	3.0 MAX	-	-	-	0.10 MAX	0.01 MAX	0.01 MAX	0.08 MAX	0.10 MAX	-
WHITE METAL 4	WJ 4	Medium Speed Medium Weight	remain	11.0~13.0	3.0~5.0	13.0~15.0	-	-	-	0.10 MAX	0.01 MAX	0.01 MAX	0.08 MAX	0.10 MAX	-
WHITE METAL 5	WJ 5		remain	-	2.0~3.0	-	28.0~29.0	-	-	-	0.10 MAX	-	0.01 MAX	-	-
WHITE METAL 6	WJ 6	High Speed Light Weight	44.0~46.0	11.0~13.0	1.0~3.0	remain	-	-	-	0.10 MAX	0.05 MAX	0.01 MAX	-	0.20 MAX	-
WHITE METAL 7	WJ 7	Medium Speed Medium Weight	11.0~13.0	13.0~15.0	1.0 MAX	remain	-	-	-	0.10 MAX	0.05 MAX	0.01 MAX	-	0.20 MAX	-
WHITE METAL 8	WJ 8		6.0~8.0	16.0~18.0	1.0 MAX	remain	-	-	-	-	0.10 MAX	0.05 MAX	0.01 MAX	-	0.20 MAX
WHITE METAL 9	WJ 9	Medium Speed Light	5.0~7.0	9.0~11.0	-	remain	-	-	-	0.10 MAX	0.05 MAX	0.01 MAX	-	0.20 MAX	0.30 MAX
WHITE METAL 10	WJ 10		0.8~1.2	14.0~15.5	0.1~0.5	remain	-	0.75~1.25	-	-	0.10 MAX	0.05 MAX	0.01 MAX	-	-

(JIS H5401)

FOR HIGH SPEED & HEAVY WEIGHT (WHITE METAL)

KIND	Sn%	Sb%	Cu%	Pb%	Ni%	Cd%	Ni x As + Cd	Brinnell 10/250/30	Cast Temp(°C)
WHITE METAL 1	88.0 MAX	7.4~7.8	2.8~3.2	0.10 MAX	0.15~0.25	0.80~1.1	-	27~33	390°C
HM 02	82.0~84.0	10.0~11.0	4.5~5.5	1.50 MAX	0.25 MAX	-	-	25~32	400°C
HOYT NO 11R	Min	87.0	7.5	3.0	0.2	1.0	-	31	388°C
	Max	89.0	-	-	1.0	-	-	32	400°C

LEADED COPPER ALLOY CASTING FOR BEARING (KELMET METAL)

KIND	SIGN	CHEMICAL COMPOSITION (%)						HARDNESS TEST	APPLY
		Pb	Ni or Ag	Fe	Sn	Other	Cu	Hv	
Leaded Copper Alloy Casting for Bearing 1	KJ 1	38~42	2.0 MAX	0.80 MAX	1.0 MAX	1.0 MAX	remain	30 MAX	For high Speed Heavy Weight Purpose
Leaded Copper Alloy Casting for Bearing 2	KJ 2	33~37	2.0 MAX	0.80 MAX	1.0 MAX	1.0 MAX	remain	35 MAX	
Leaded Copper Alloy Casting for Bearing 3	KJ 3	28~32	2.0 MAX	0.80 MAX	1.0 MAX	1.0 MAX	remain	40 MAX	
Leaded Copper Alloy Casting for Bearing 4	KJ 4	23~27	2.0 MAX	0.80 MAX	1.0 MAX	1.0 MAX	remain	45 MAX	

(JIS H5403)

LEADED BRONZE ALLOY CASTING

KIND	SIGN	CHEMICAL COMPOSITION (%)					IMPURITIES		
		Cu	Sn	Pb	Zn	Ni	Zn	Fe	etc
Leaded Bronze Alloy Casting 1	LBC 1	remain	3.0~5.0	3.0~5.0	4.0 MAX	1.0 MAX	-	0.3 MAX	0.1 MAX
Leaded Bronze Alloy Casting 2	LBC 2	remain	9.0~11.0	4.0~6.0	-	1.0 MAX	1.0 MAX	0.3 MAX	1.0 MAX
Leaded Bronze Alloy Casting 3	LBC 3	remain	9.0~11.0	9.0~11.0	-	1.0 MAX	1.0 MAX	0.3 MAX	1.0 MAX
Leaded Bronze Alloy Casting 4	LBC 4	remain	7.0~9.0	14.0~16.0	-	1.0 MAX	1.0 MAX	0.3 MAX	1.0 MAX
Leaded Bronze Alloy Casting 5	LBC 5	remain	6.0~8.0	16.0~22.0	-	1.0 MAX	1.0 MAX	0.3 MAX	1.0 MAX
Leaded Bronze Alloy Casting 6	LBC 6	remain	3.0~4.0	22.0~26.0	-	1.0 MAX	1.0 MAX	0.3 MAX	1.0 MAX

(JIS H5115)

BRONZE ALLOY CASTING

KIND	SIGN	CHEMICAL COMPOSITION (%)				IMPURITIES
		Cu	Sn	Zn	Pb	
Bronze Alloy Casting 1	BC 1	79.0~83.0	2.0~4.0	8.0~12.0	3.0~7.0	2.0 MAX
Bronze Alloy Casting 2	BC 2	86.0~90.0	7.0~9.0	3.0~5.0	1.0 MAX	1.0 MAX
Bronze Alloy Casting 3	BC 3	86.5~89.5	9.0~11.0	1.0~3.0	1.0 MAX	1.0 MAX
Bronze Alloy Casting 4	BC 4	81.0~87.0	4.0~6.0	4.0~7.0	3.0~6.0	2.0 MAX
Bronze Alloy Casting 5	BC 5	86.0~90.0	5.0~7.0	3.0~5.0	1.0~3.0	1.5 MAX

(JIS H5111)

- ✓ POWER PLANT BEARING
- ✓ MARINE ENGINE BEARING
- ✓ POWER PLANT PART & ACCESSORY
- ✓ LOCOMOTIVE SPARE PART
- ✓ SPECIAL TILTING PAD BEARING
- ✓ EACH TYPE VALVE STEMS



Scan QR Code
Visit Website

metalbearing.co.kr



DAEDONG METAL IND.CO.

CONTACT

34, Namhangseo-ro, Yeongdo-gu,
Busan, Republic of Korea

Phone : +82 51.417.2210

Fax : +82 51.417.2213

Email : DDMETAL55@naver.com